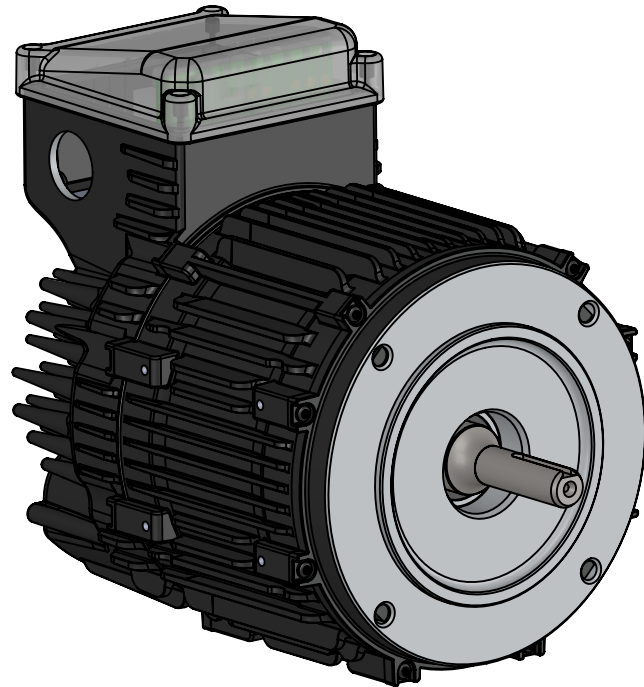


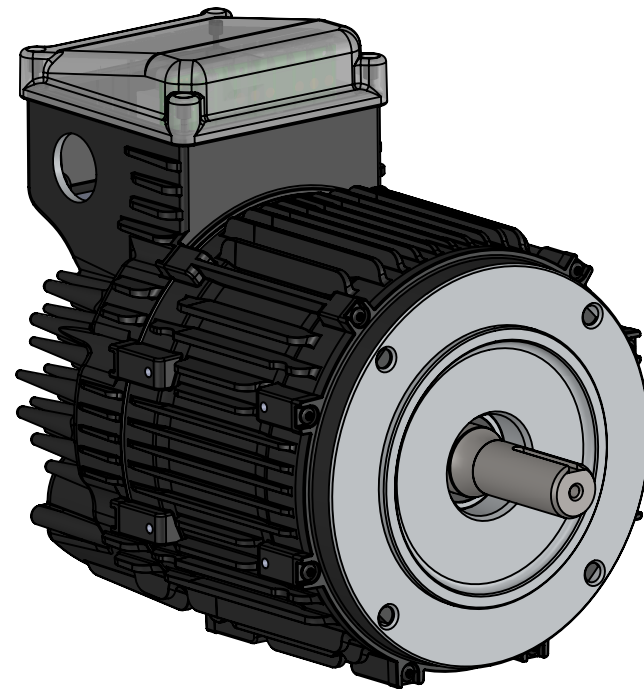
# Teknic ClearPath®

## Integral Horsepower Motors & Accessories

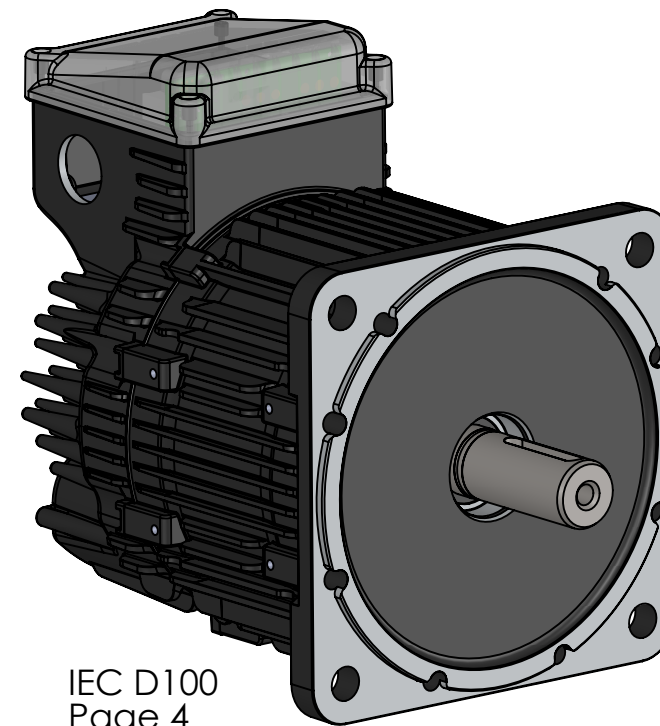
All dimensions are in mm [inch] unless otherwise noted.  
Sheet Scale 1:1



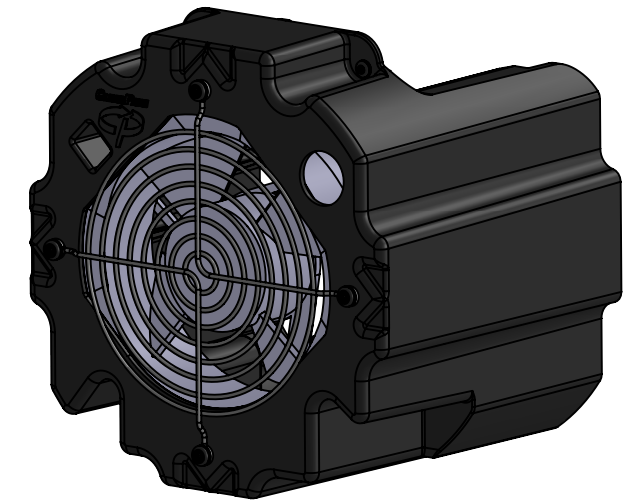
NEMA 56  
Page 2



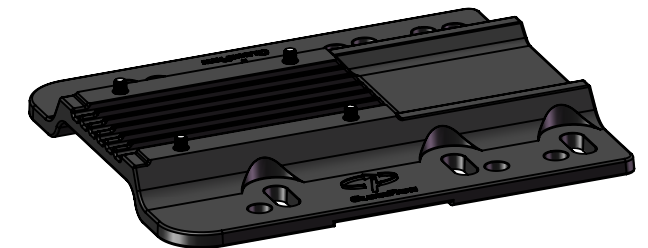
NEMA 143/145  
Page 3



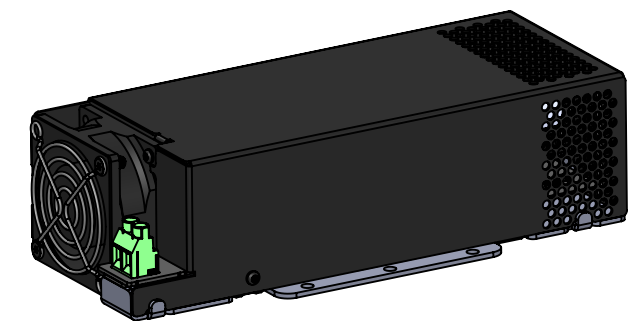
IEC D100  
Page 4



Blower Kit  
Page 5



Foot Mount Kit  
Page 6



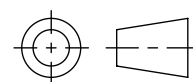
Regenerated  
Energy Shunt  
Page 7

Unless otherwise specified, untoleranced  
dimensions default to:  
X.XX: ± .25mm [0.010]  
X.XXX: ± .125mm [0.005]

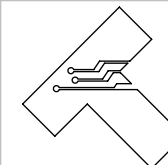
**Teknic, Incorporated**

Victor, NY 14564 USA

This document and related electronic files are the sole property of Teknic, Incorporated and contain proprietary information.



Third-Angle Projection



Additional documentation including product specifications, up-to-date compliance information, and manuals can be downloaded from Teknic's website.

Visit <https://www.teknic.com/> to access that documentation.

DWG. NO./REV

D1198/C

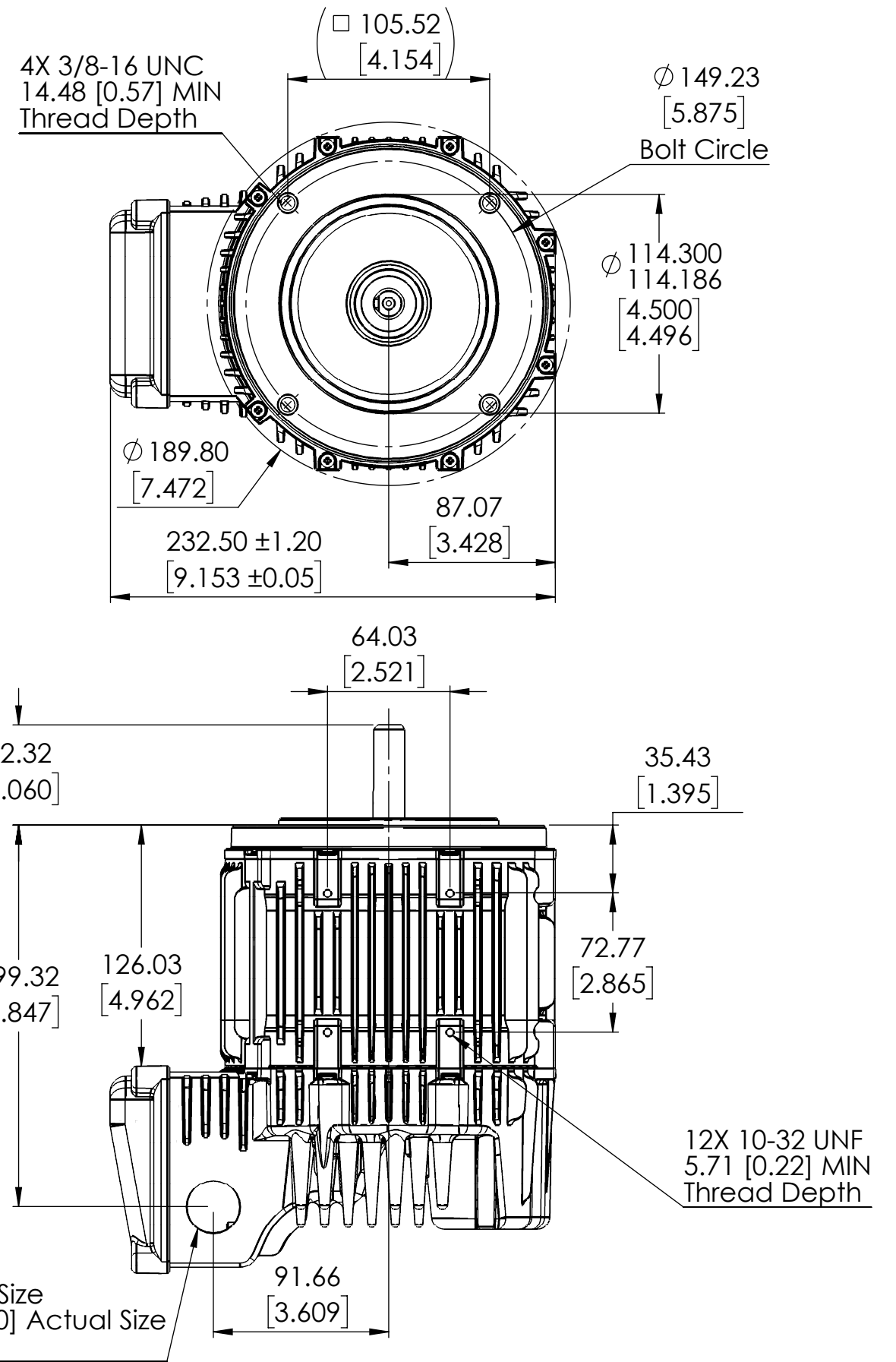
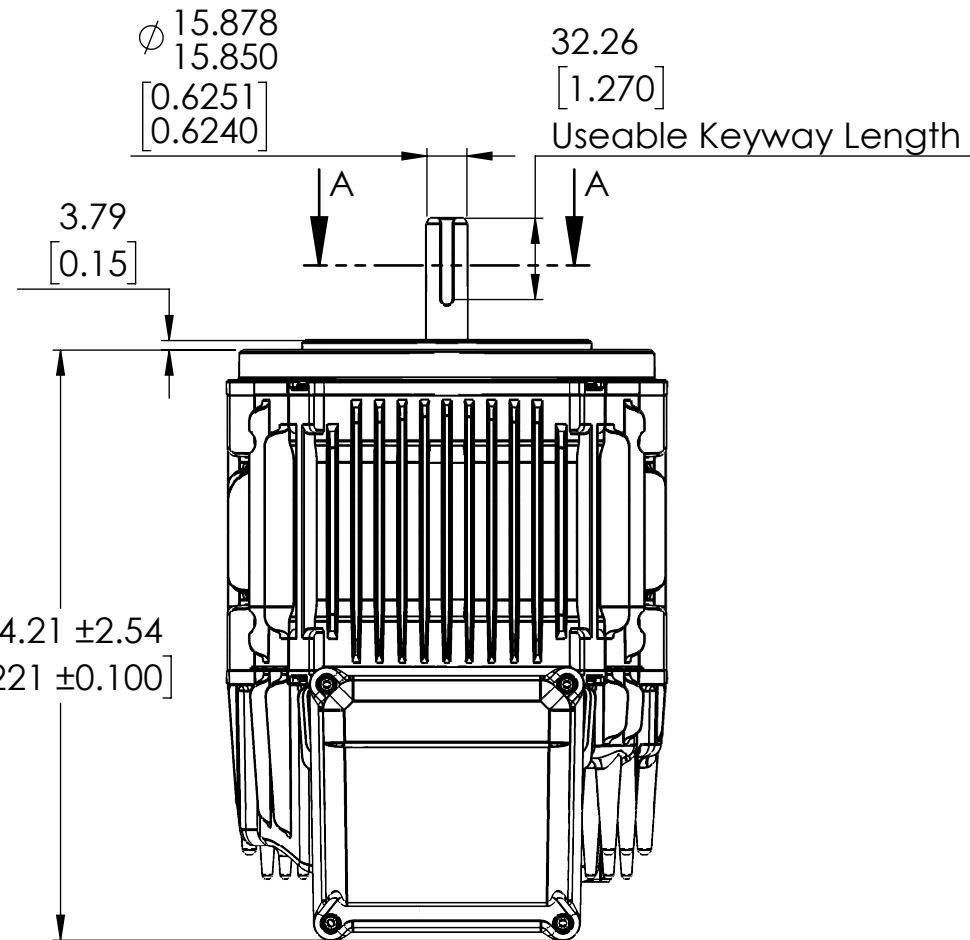
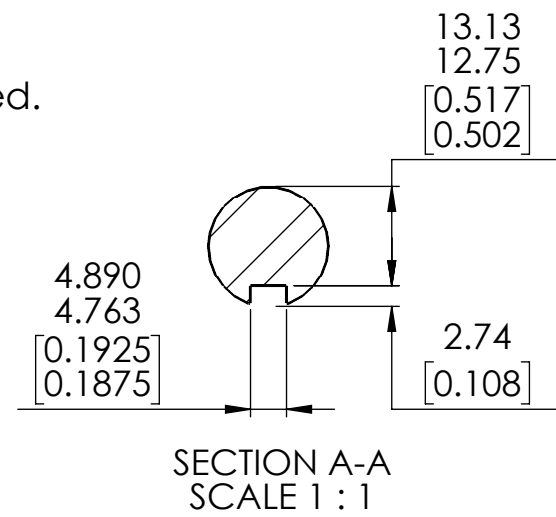
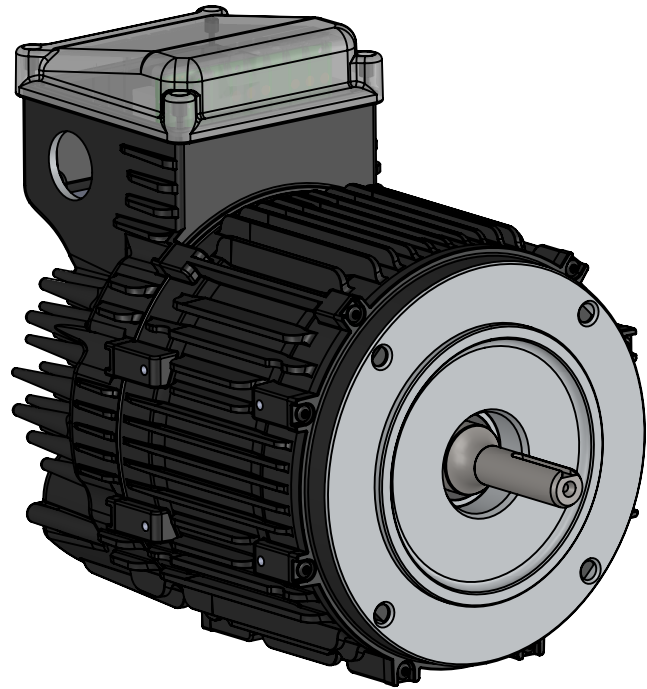
TITLE: ClearPath Integral HP Motors & Accessories

1

of 7  
Sheets

# NEMA 56 0.625" ShaftØ

All dimensions are in mm [inch] unless otherwise noted.  
Sheet Scale 1:3

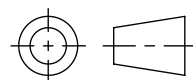


Unless otherwise specified, untoleranced dimensions default to:  
X.XX: ± .25mm [0.010]  
X.XXX: ± .125mm [0.005]

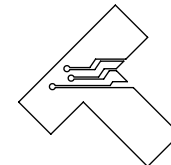
**Teknic, Incorporated**

Victor, NY 14564 USA

This document and related electronic files are the sole property of Teknic, Incorporated and contain proprietary information.



Third-Angle Projection



Additional documentation including product specifications, up-to-date compliance information, and manuals can be downloaded from Teknic's website.

Visit <https://www.teknic.com/> to access that documentation.

DWG. NO./REV  
**D1198/C**

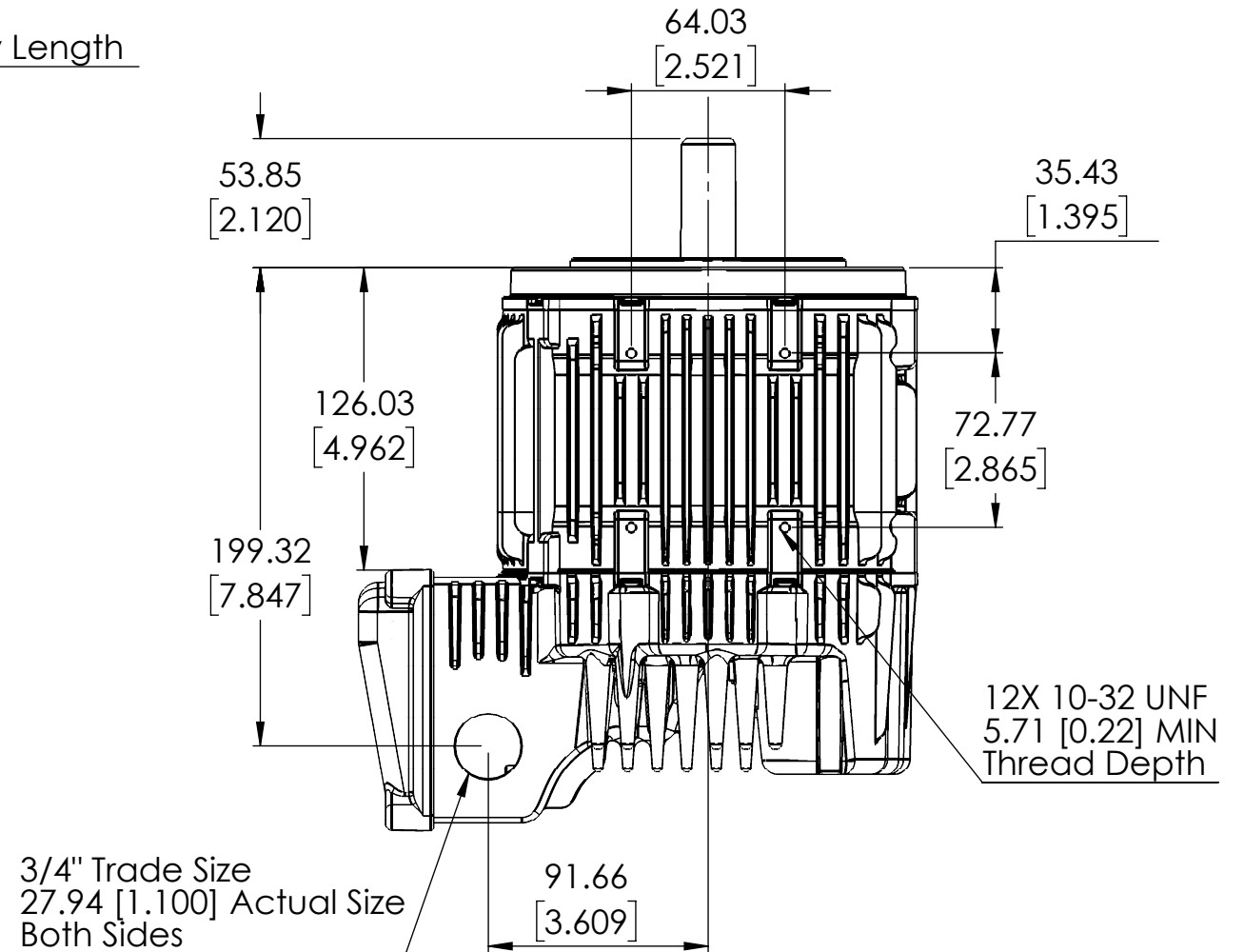
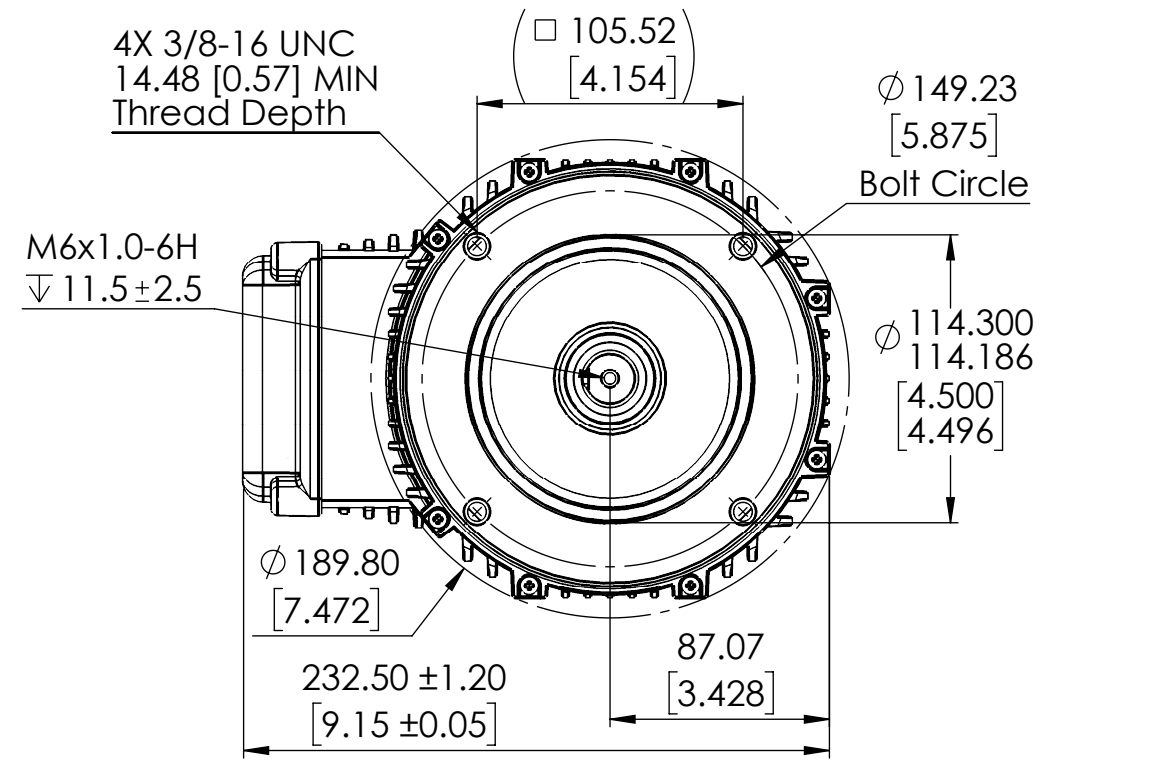
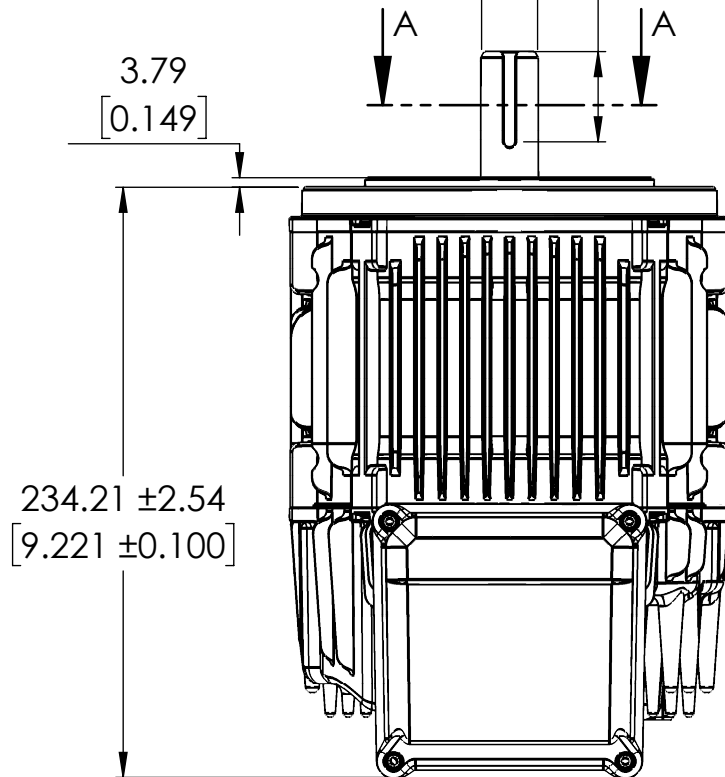
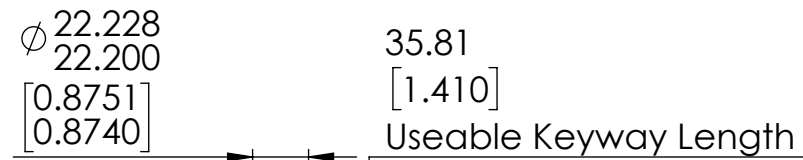
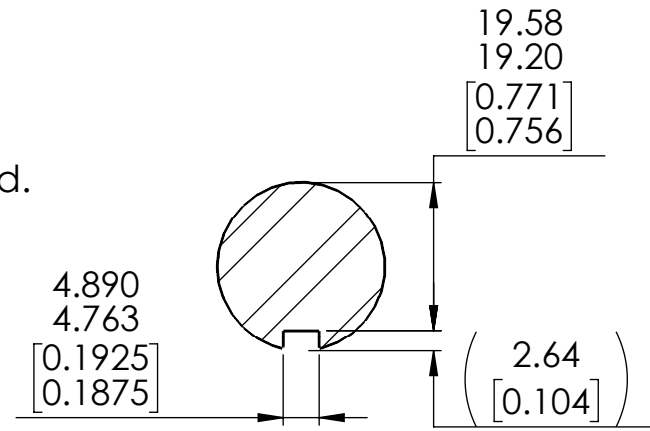
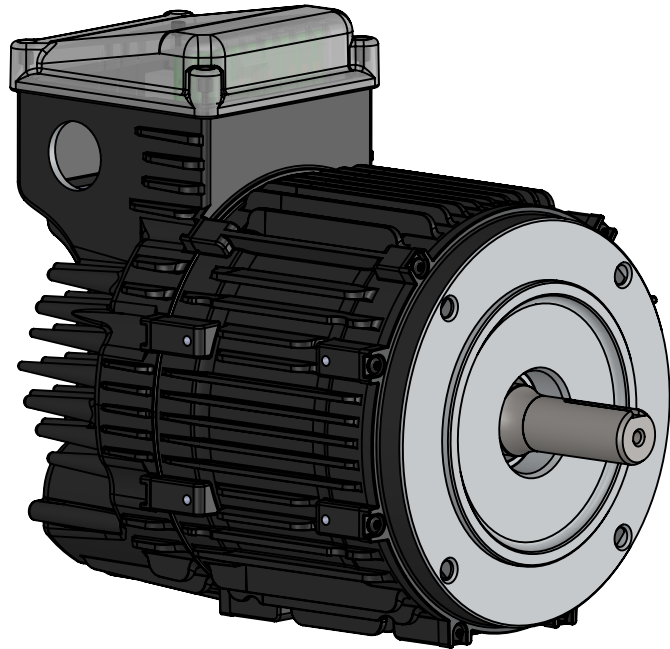
TITLE: ClearPath Integral HP Motors & Accessories

**2**  
of 7  
Sheets

# NEMA 143/145

## 0.875" ShaftØ

All dimensions are in mm [inch] unless otherwise noted.  
Sheet Scale 1:3



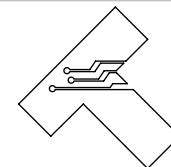
Unless otherwise specified, untoleranced dimensions default to:  
X.XX: ± .25mm [0.010]  
X.XXX: ± .125mm [0.005]

**Teknic, Incorporated**

Victor, NY 14564 USA

This document and related electronic files are the sole property of Teknic, Incorporated and contain proprietary information.

Third-Angle Projection



Additional documentation including product specifications, up-to-date compliance information, and manuals can be downloaded from Teknic's website.

Visit <https://www.teknic.com/> to access that documentation.

DWG. NO./REV

D1198/C

TITLE: ClearPath Integral HP Motors & Accessories

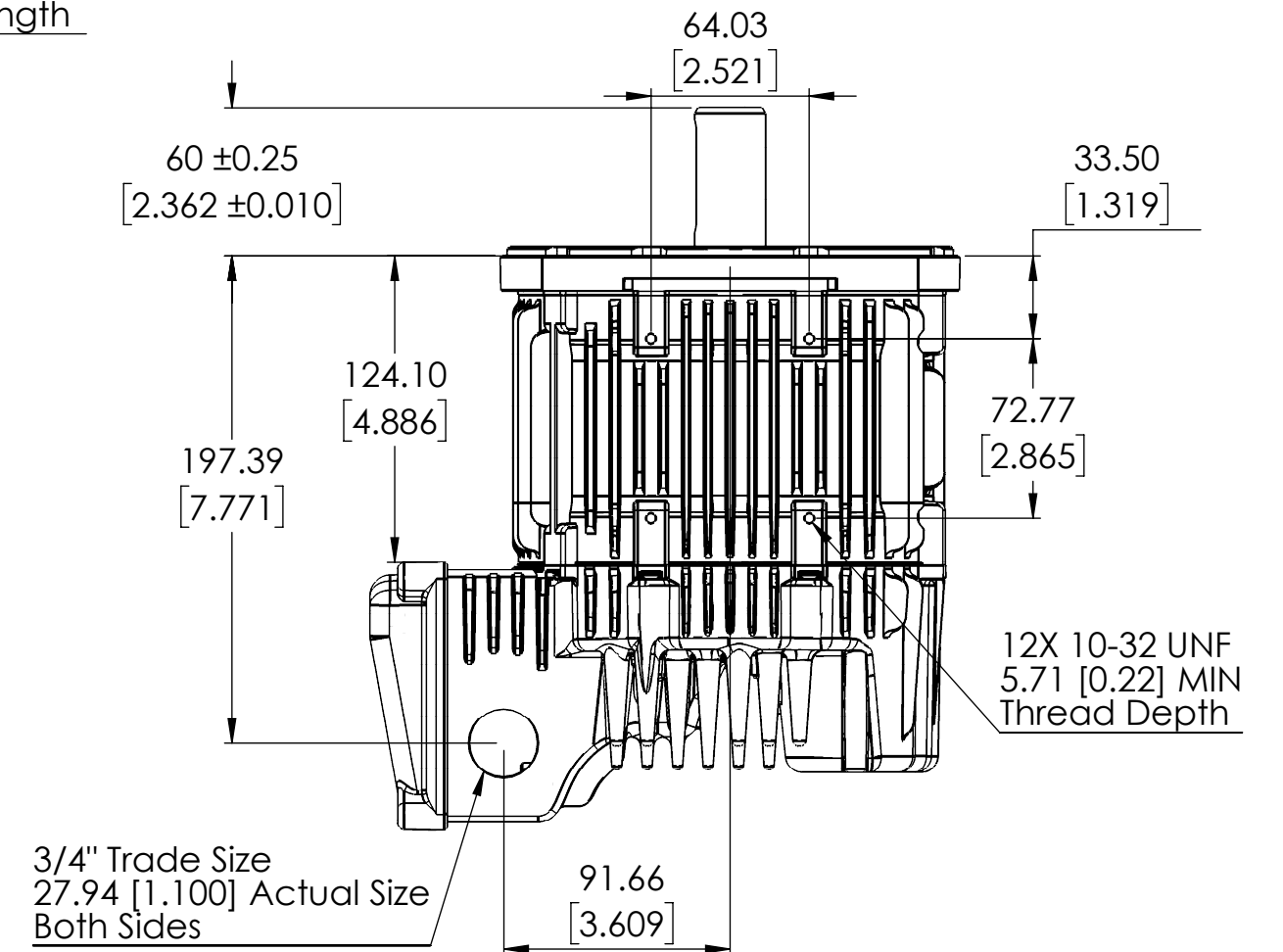
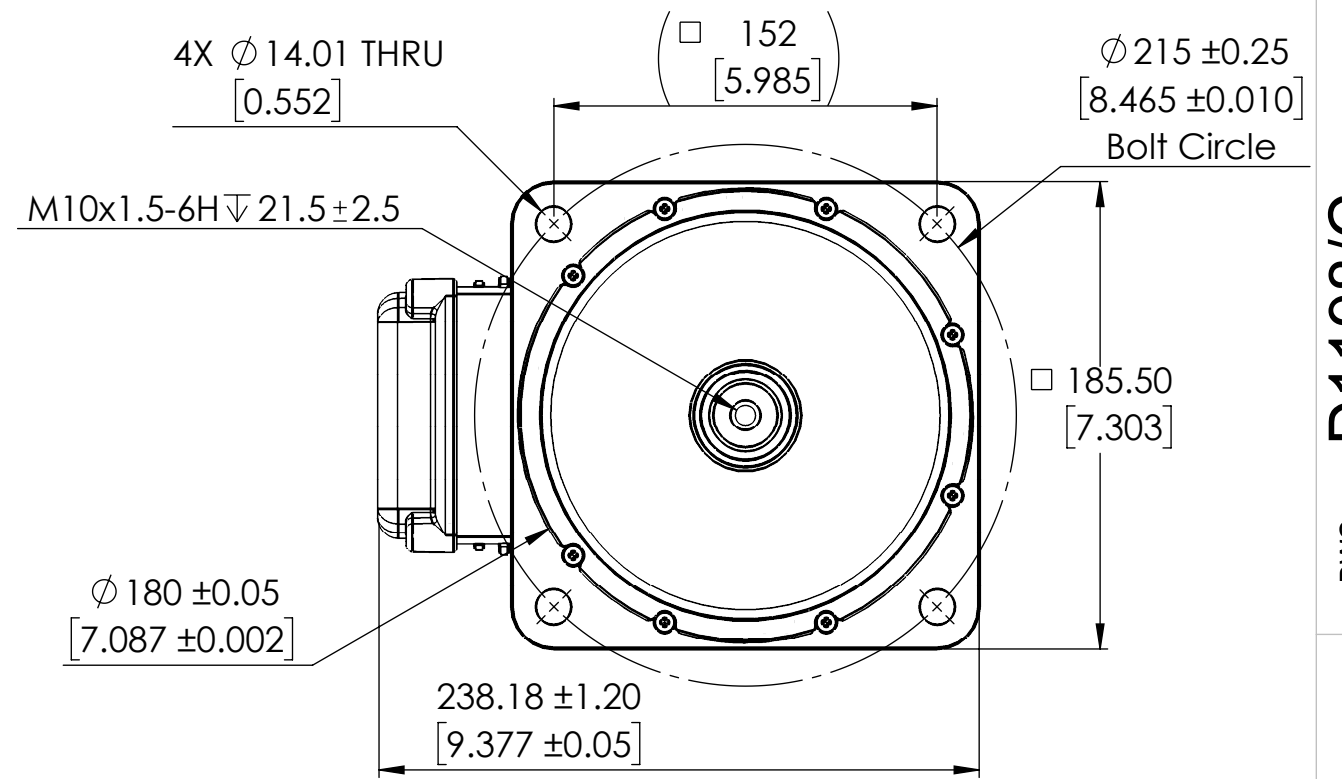
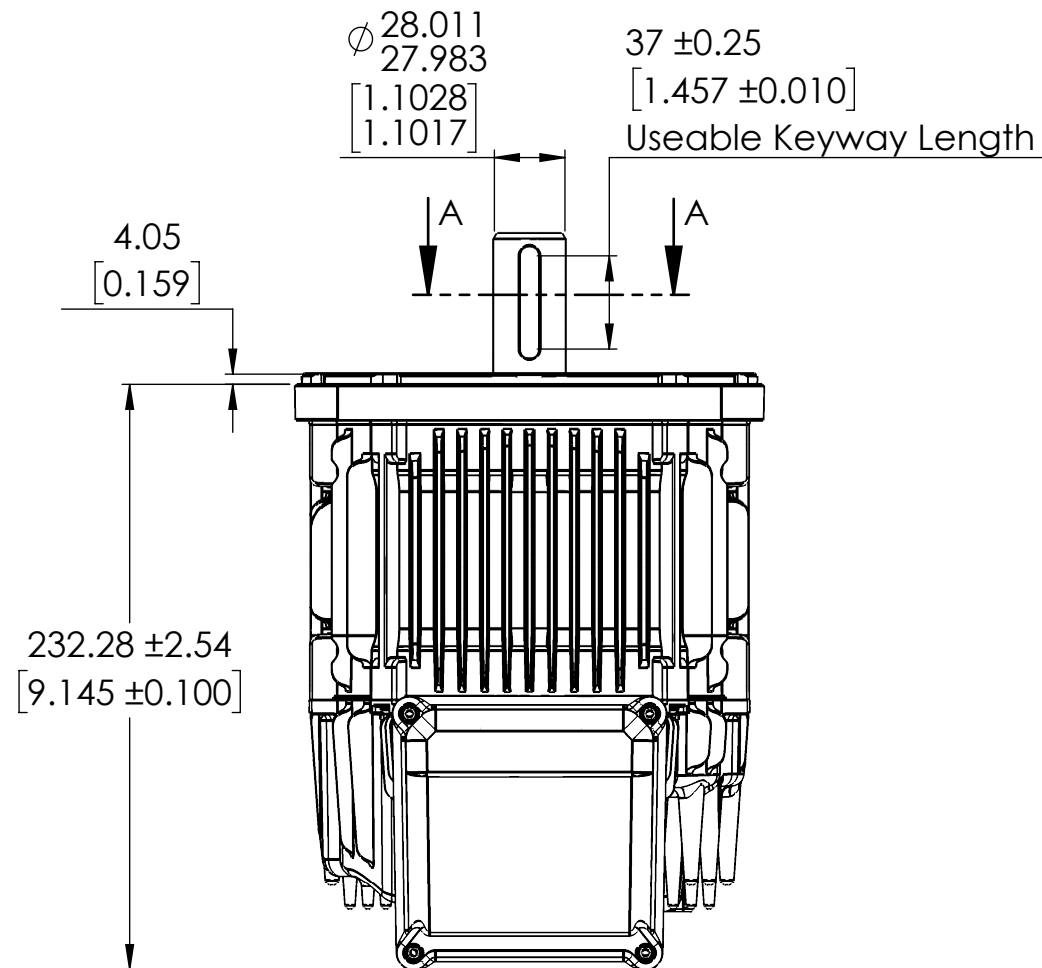
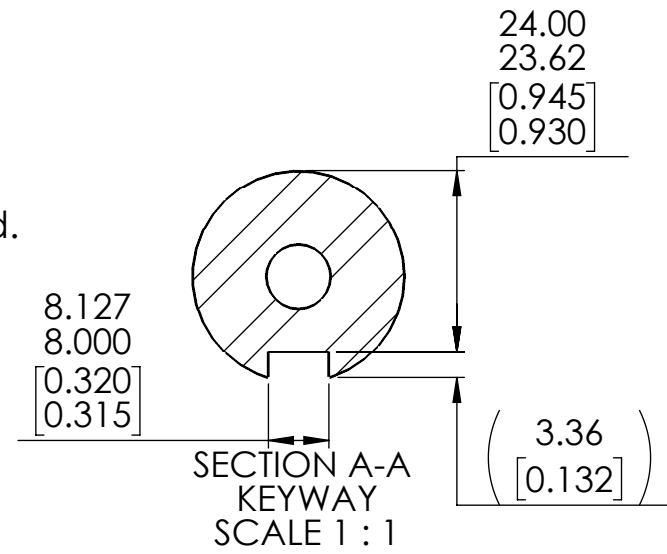
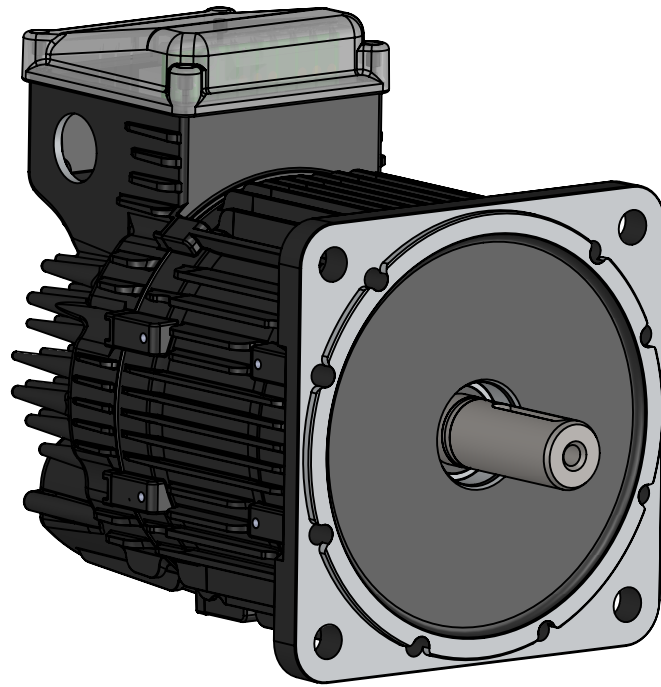
3

of 7  
Sheets

# IEC D100

## 28mm ShaftØ

All dimensions are in mm [inch] unless otherwise noted.  
Sheet Scale 1:3

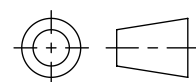


Unless otherwise specified, untoleranced dimensions default to:  
X.XX: ± .25mm [0.010]  
X.XXX: ± .125mm [0.005]

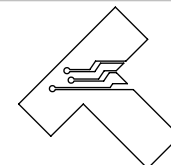
**Teknic, Incorporated**

Victor, NY 14564 USA

This document and related electronic files are the sole property of Teknic, Incorporated and contain proprietary information.



Third-Angle Projection



Additional documentation including product specifications, up-to-date compliance information, and manuals can be downloaded from Teknic's website.

Visit <https://www.teknic.com/> to access that documentation.

DWG. NO./REV  
**D1198/C**

TITLE: ClearPath Integral HP Motors & Accessories

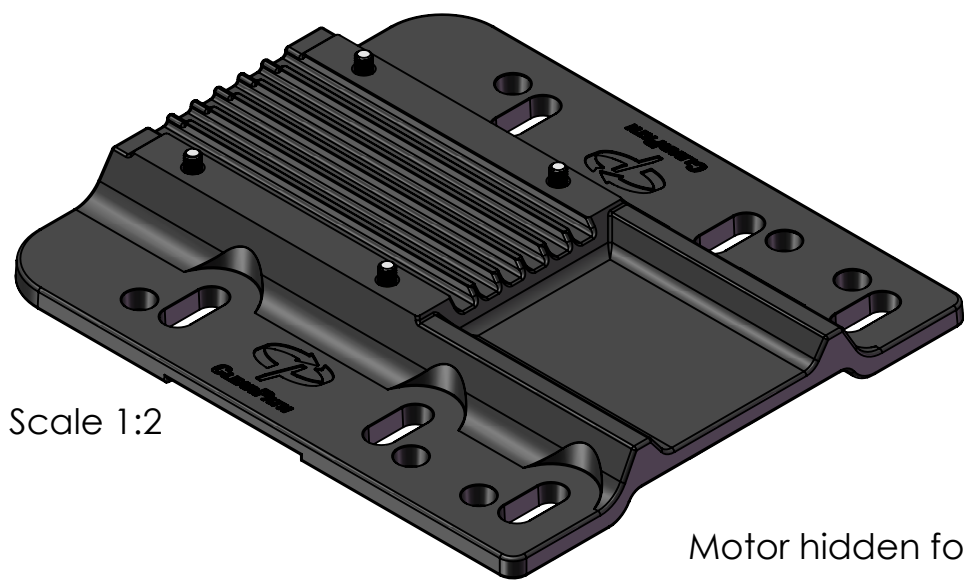
**4**  
of 7  
Sheets

# Foot Mount Kit

## P/N: FOOT-56-14X

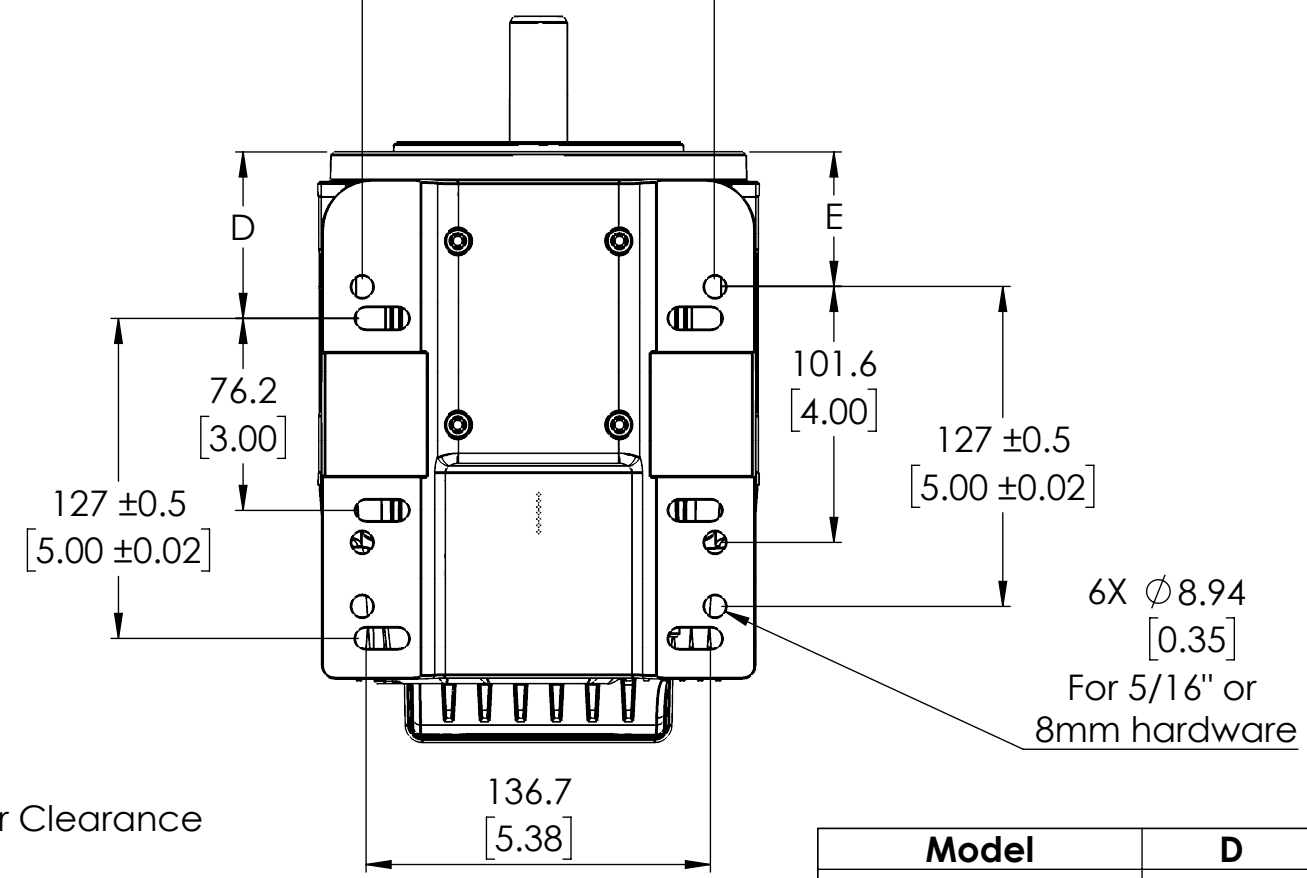
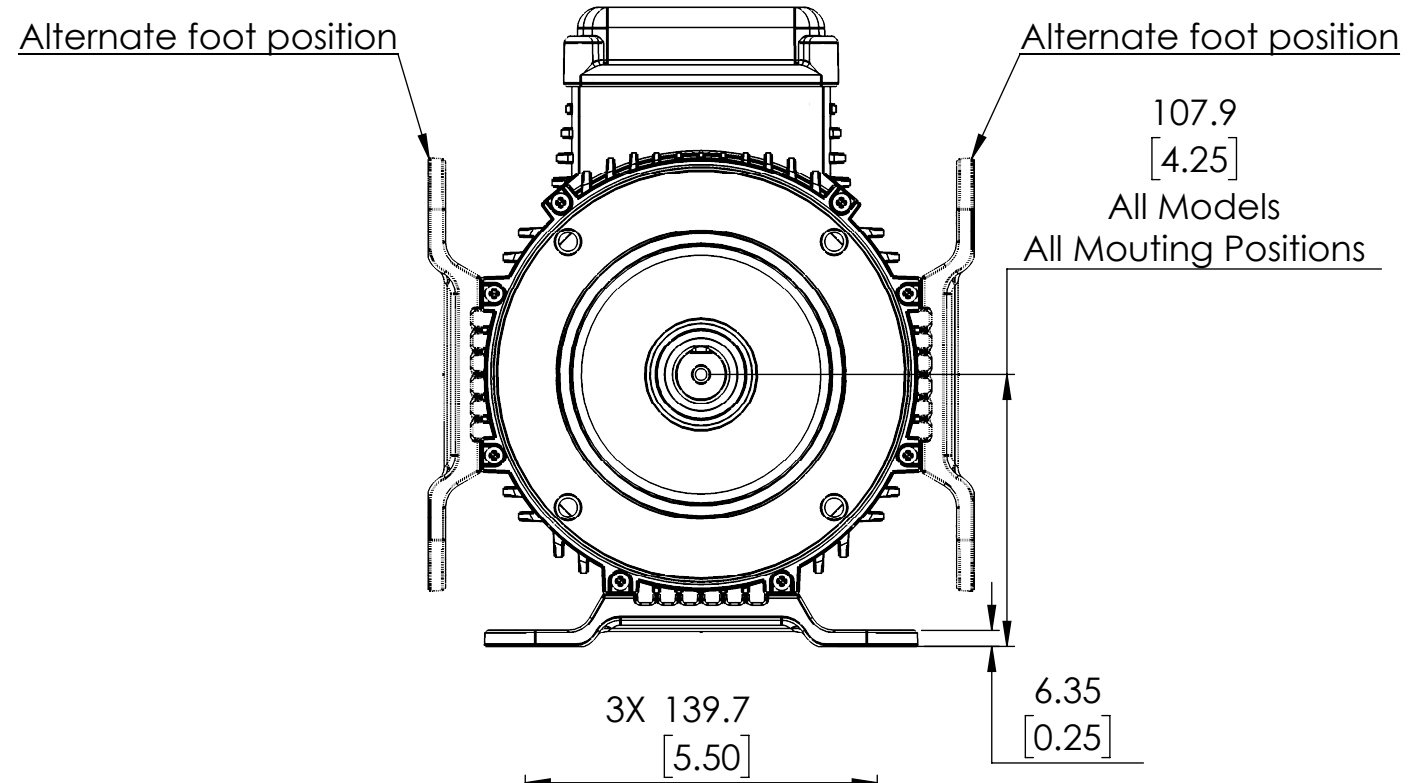
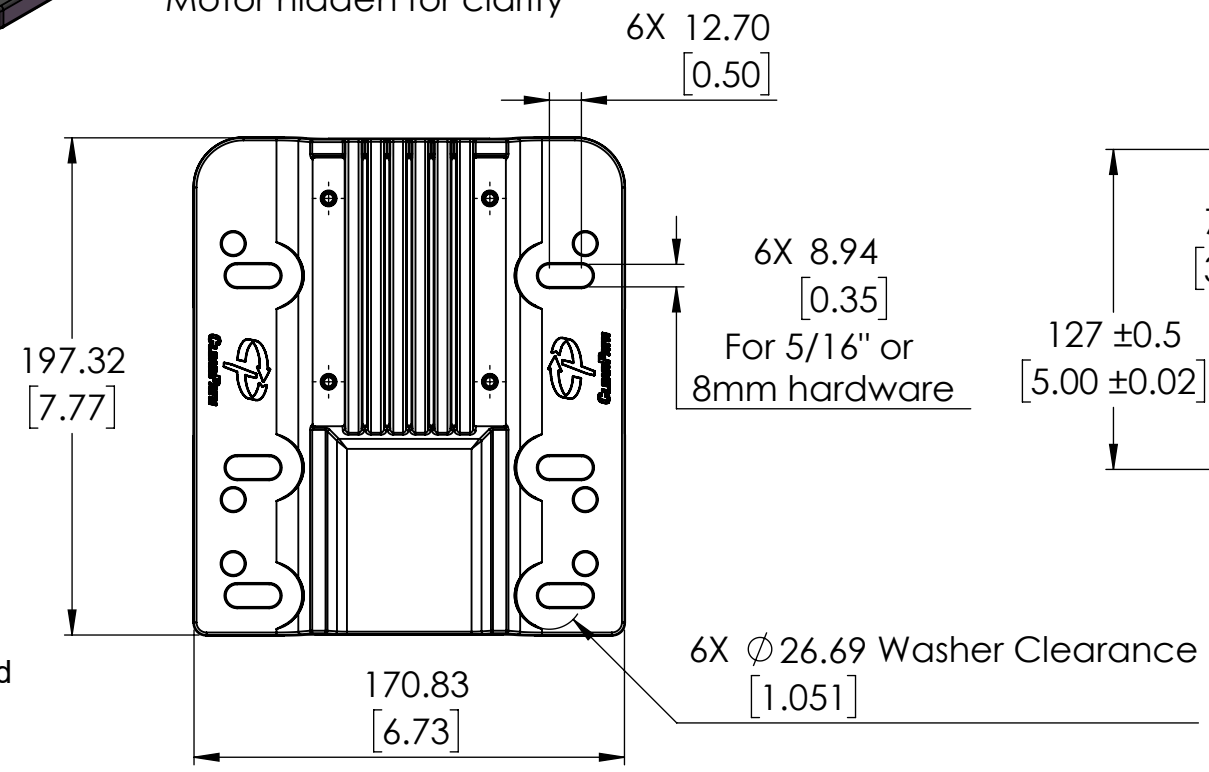
### Available for all models

Hardware included: 4 # 10-32 x 3/8" Socket Head Screws  
 All dimensions are in mm [inch] unless otherwise noted.  
 Sheet Scale 1:3



Scale 1:2

Motor hidden for clarity



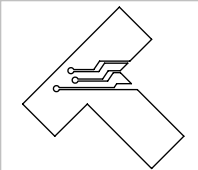
Unless otherwise specified, untoleranced dimensions default to:  
**X.XX:** ± .25mm [0.010]  
**X.XXX:** ± .125mm [0.005]

Model	D	E
NEMA 56/143/145	66.1 [2.60]	53.4 [2.10]
IEC D100	60.1 [2.37]	47.6 [1.87]

**Teknic, Incorporated**  
 Victor, NY 14564 USA

This document and related electronic files are the sole property of Teknic, Incorporated and contain proprietary information.

Third-Angle Projection



Additional documentation including product specifications, up-to-date compliance information, and manuals can be downloaded from Teknic's website.  
 Visit <https://www.teknic.com/> to access that documentation.

DWG. NO./REV  
**D1198/C**

TITLE: ClearPath Integral HP Motors & Accessories

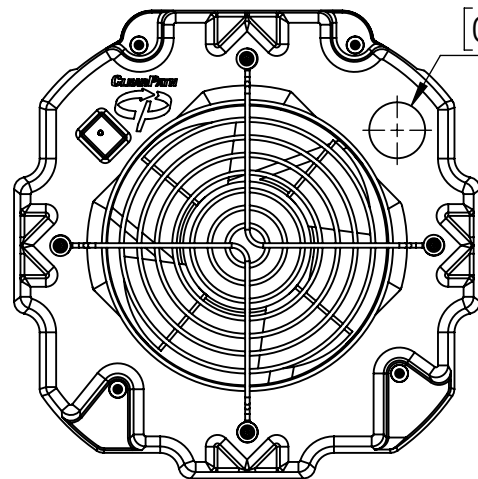
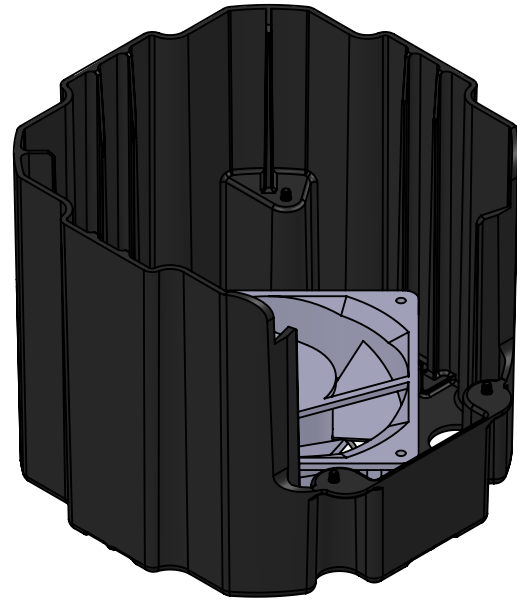
**5**  
 of 7 Sheets

# Blower Kit

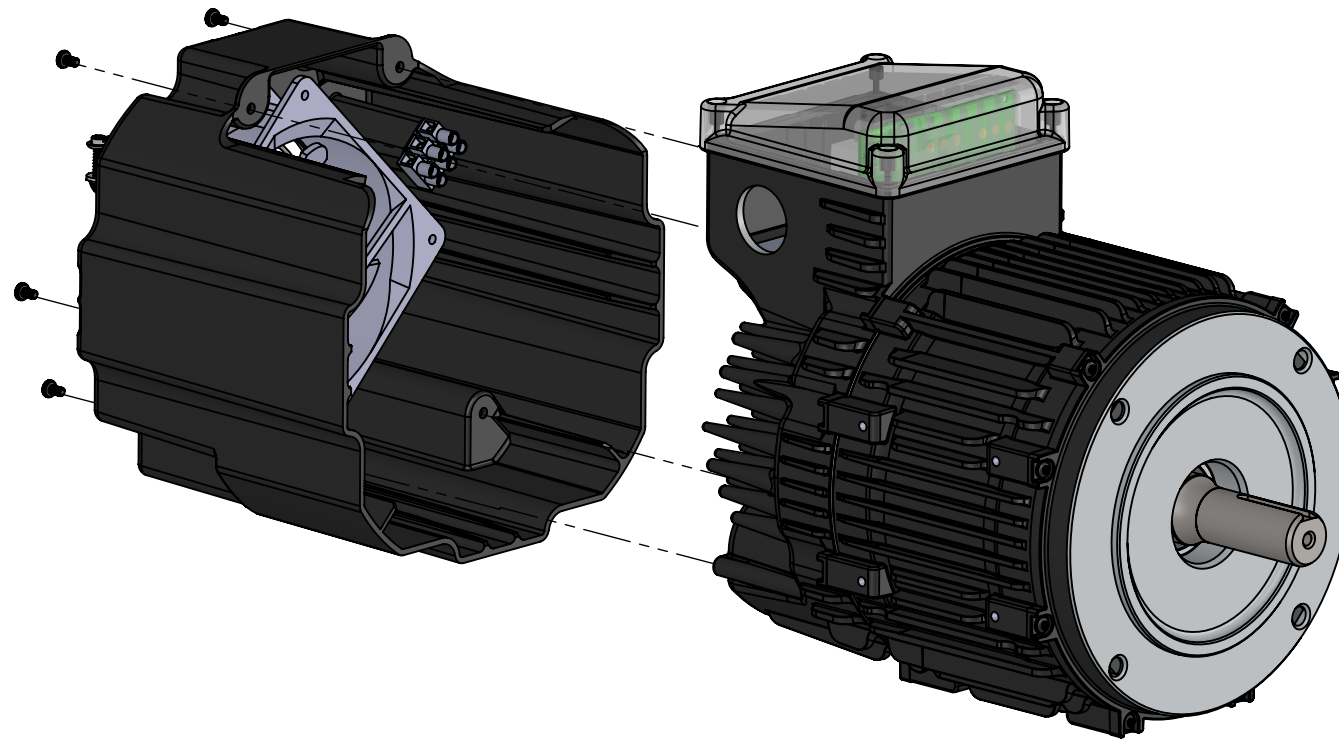
## P/N: BLOWER-1P230V

### Available for all models

Hardware included: 4 #6-32 x 1/4" Pan Head Screws  
 All dimensions are in mm [inch] unless otherwise noted.  
 Sheet Scale 1:3

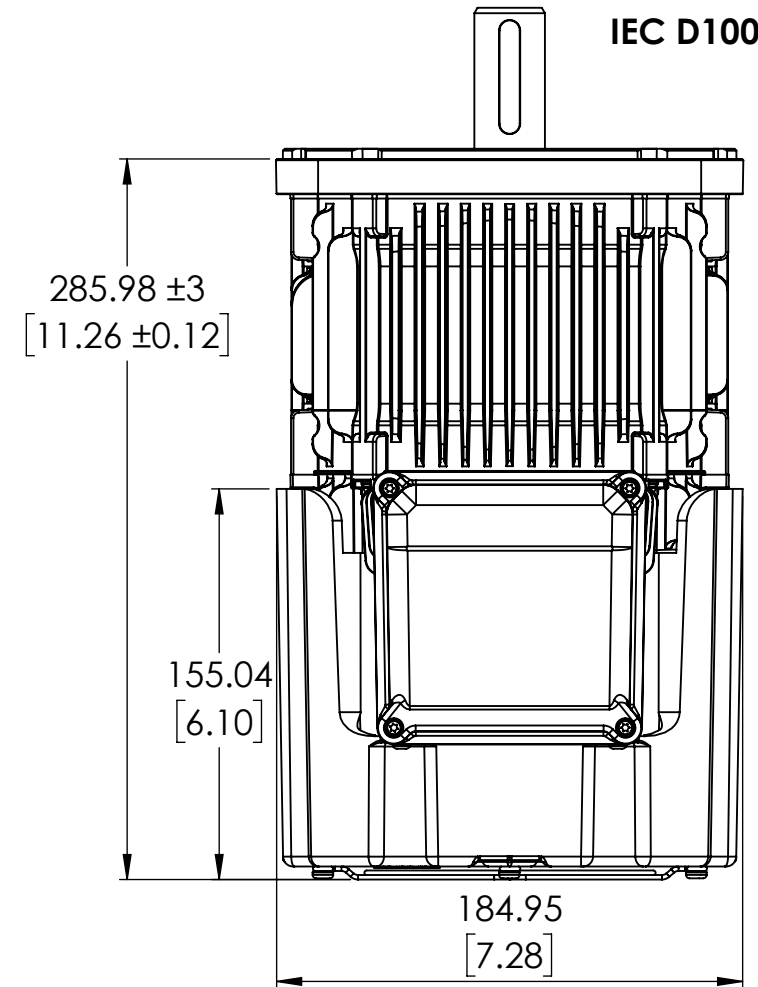
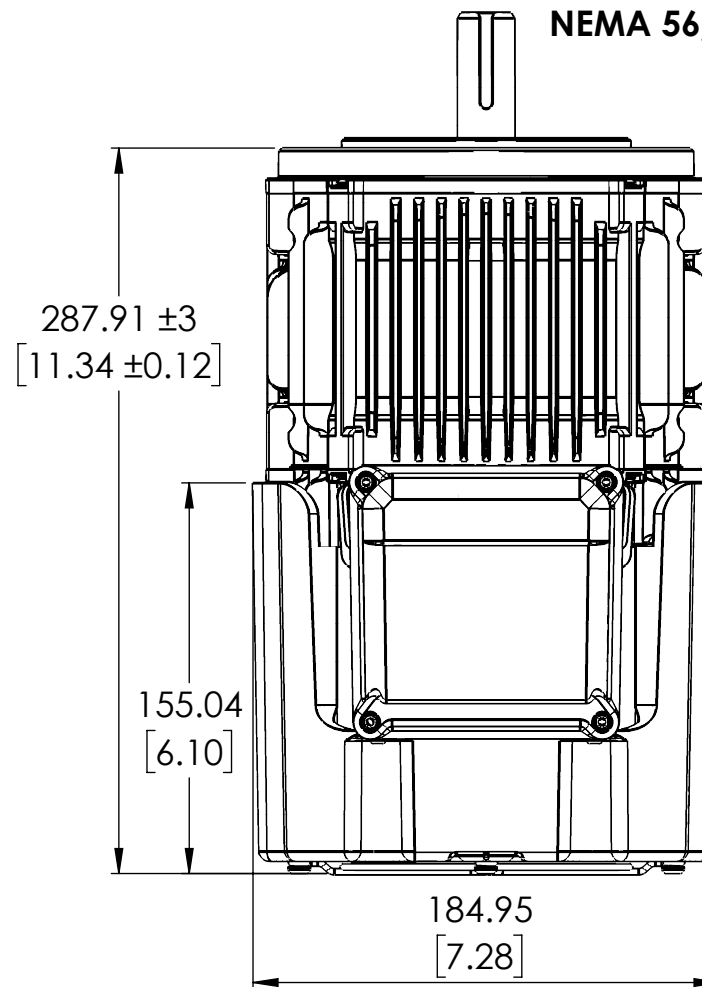


1/2" Trade Size  
 $\phi 22.23$  Actual Size  
 [0.875]



NEMA 56/143/145

IEC D100

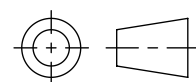


Unless otherwise specified, untoleranced dimensions default to:  
 X.XX:  $\pm .25\text{mm}$  [0.010]  
 X.XXX:  $\pm .125\text{mm}$  [0.005]

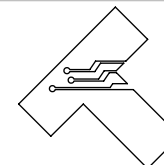
**Teknic, Incorporated**

Victor, NY 14564 USA

This document and related electronic files are the sole property of Teknic, Incorporated and contain proprietary information.



Third-Angle Projection



Additional documentation including product specifications, up-to-date compliance information, and manuals can be downloaded from Teknic's website.

Visit <https://www.teknic.com/> to access that documentation.

DWG. NO./REV

D1198/C

TITLE: ClearPath Integral HP Motors & Accessories

6

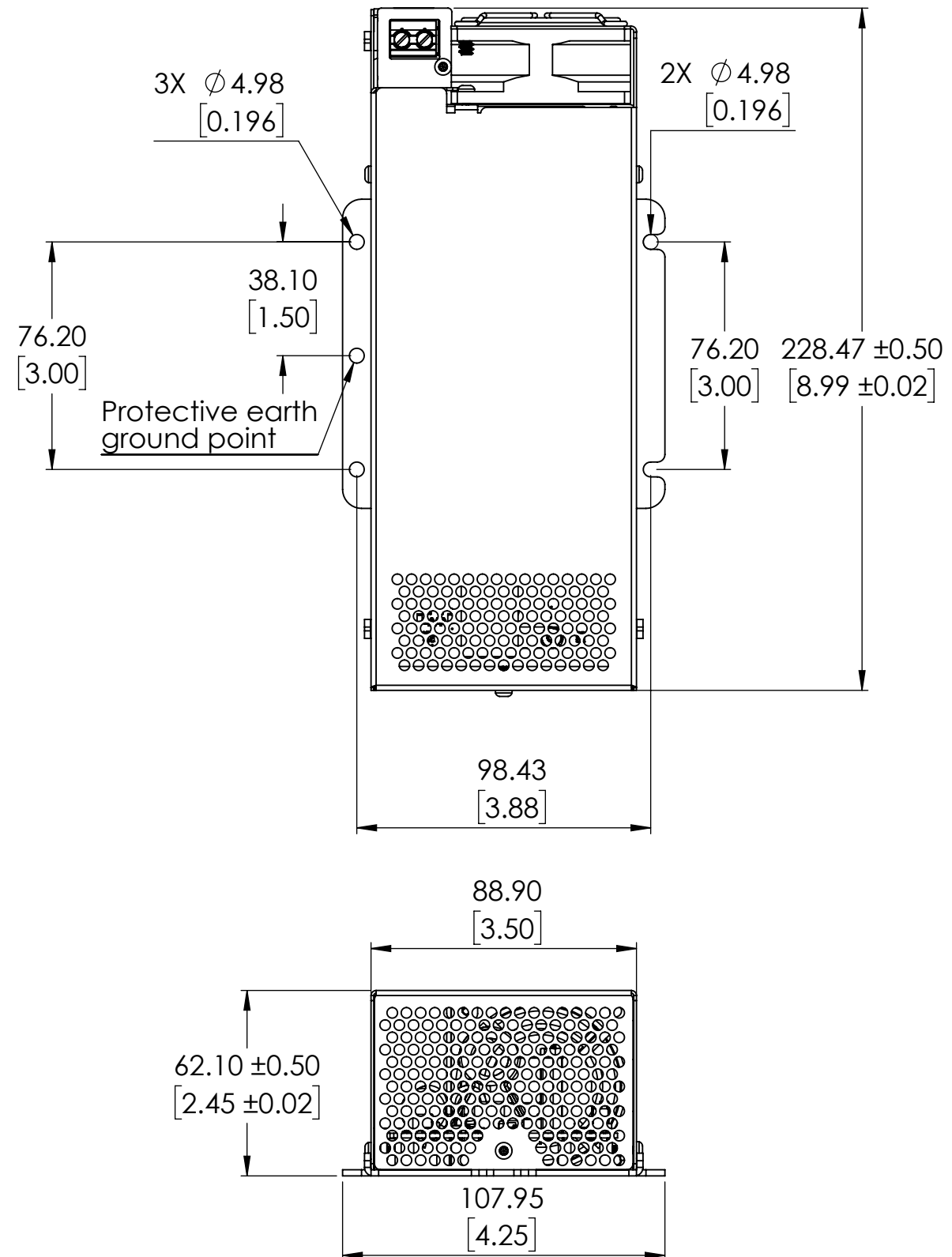
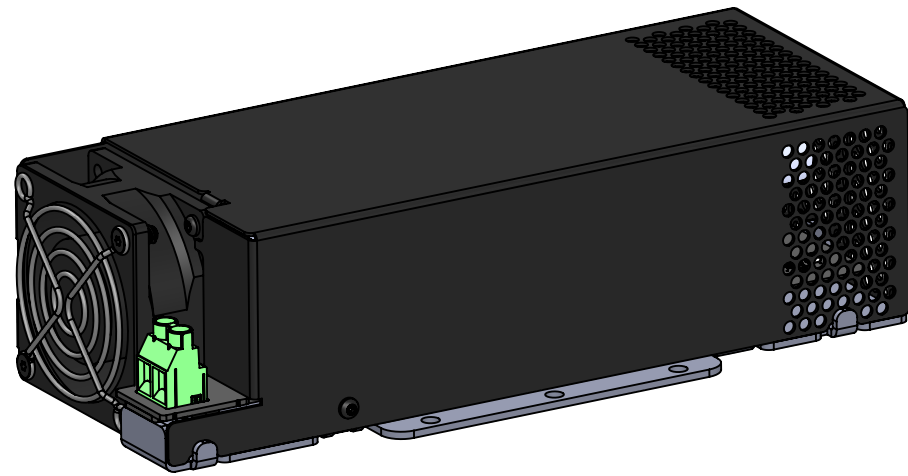
of 7 Sheets

# Regenerated Energy Shunt

## P/N: RES-225

Available for all models

See manual for proper mounting orientation.  
 All dimensions are in mm [inch] unless otherwise noted.  
 Sheet Scale 1:2

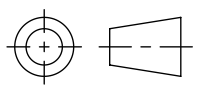


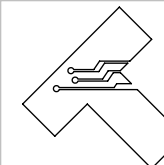
Unless otherwise specified, untoleranced dimensions default to:  
 X.XX:  $\pm .25\text{mm}$  [0.010]  
 X.XXX:  $\pm .125\text{mm}$  [0.005]

**Teknic, Incorporated**

Victor, NY 14564 USA

This document and related electronic files are the sole property of Teknic, Incorporated and contain proprietary information.

  
 Third-Angle Projection



Additional documentation including product specifications, up-to-date compliance information, and manuals can be downloaded from Teknic's website.  
 Visit <https://www.teknic.com/> to access that documentation.

DWG. NO./REV

D1198/C

TITLE: ClearPath Integral HP Motors & Accessories

7 of 7 Sheets